

Kentucky's Green River CREP



Dan Figert, Assistant Director



USDA CREP Program:

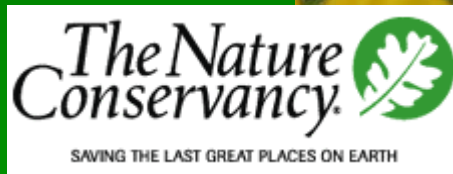
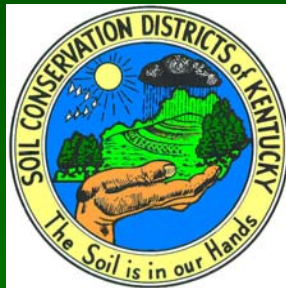
- Offshoot of CRP (CRP on Steroids)
- Partnership between USDA and State (minimum 80/20 match)
- State and USDA determine:
 - Ag-related environmental issue
 - Geographic area
 - Specific Practices
- Money Available:
 - 10-15 year rental agreement
 - 50% Cost-Share to install practices
 - SIP and PIP
 - State based enhancements!



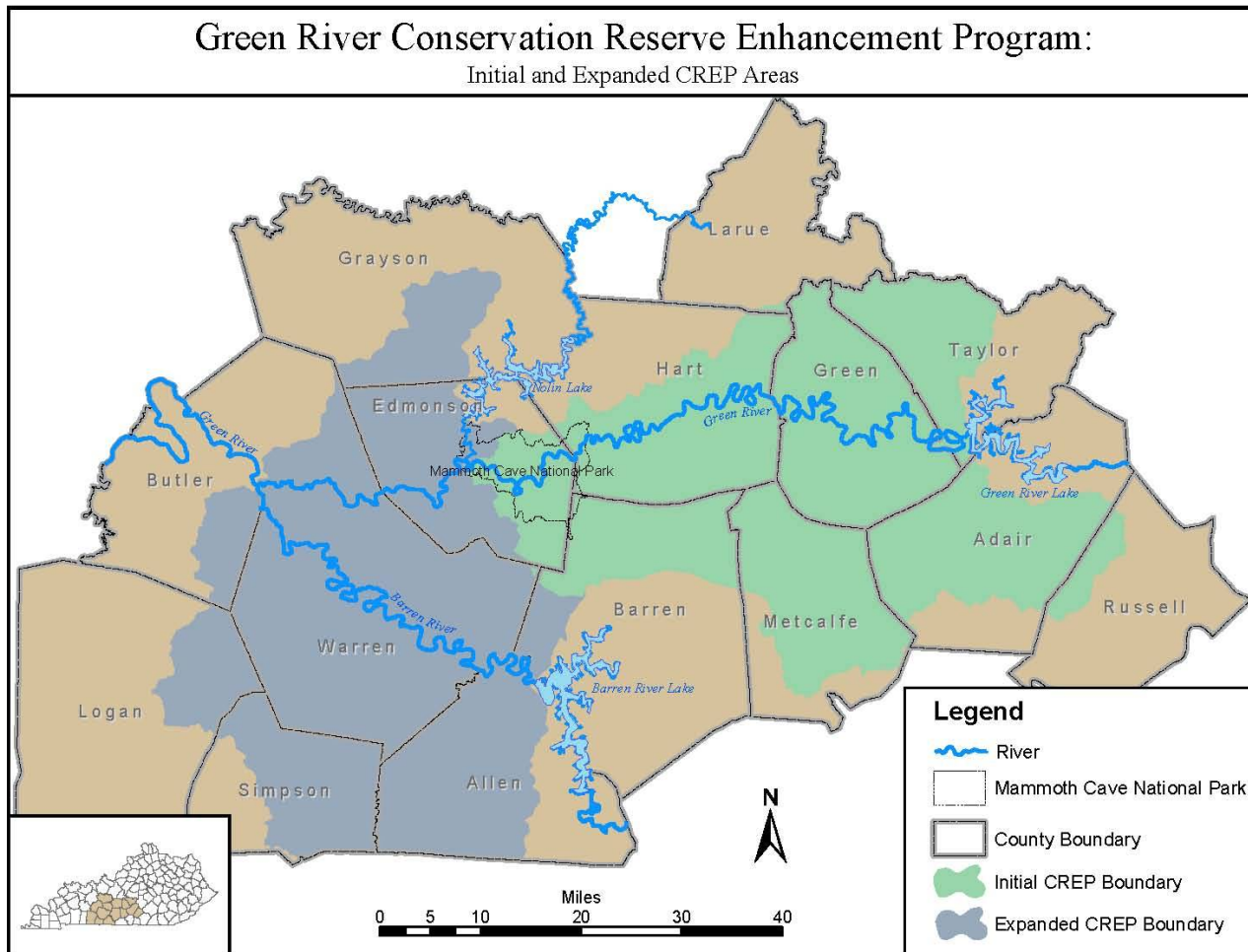
Why the Green River Watershed?

- **The River is Special!**
 - One of the top 5 in the country
 - Over 70% of KY's fresh water mussels
 - It has 7 Federally Endangered mussels
 - Over 20 species of crayfish and the Mammoth Cave Shrimp (Fed. Endangered)
 - Over 150 species of fish (7 endemic)

Partners Make it Happen:



KY CREP, Focused by Geography and by Practices



ELIGIBLE PRACTICES

■ 8 Continuous Practices

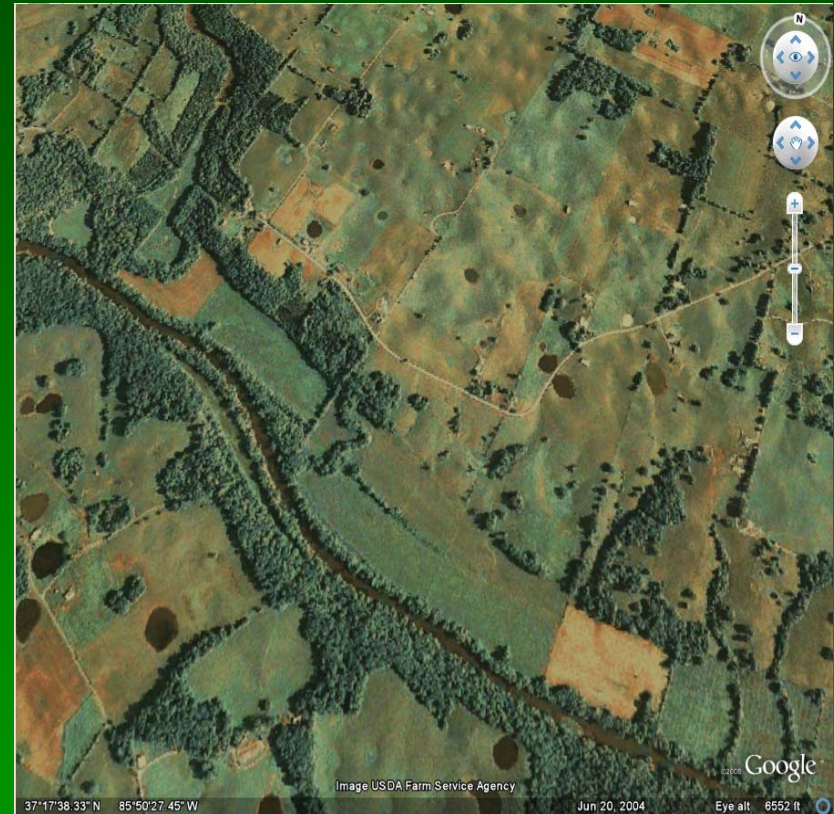
- CP-8A - Grassed Waterway*
- CP-9 - Shallow Water Area
- CP-15A - Contour Grass Strip
- CP-23 - Wetland Restoration*
- CP-23A - Non-floodplain*
- CP-21 - Filter Strip*
- CP-22 - Riparian Buffer*
- CP-29 - Habitat Buffer*

■ 10 General CRP Practices

- CP-1 - Introduced Grass
- CP-2 - Native Grass
- CP-4B&D - Wildlife Habitat
- CP-3s - 2 Tree Planting
- CP-10 - Grass Already Est.
- CP-11 - Trees Already Est.
- CP-12 - Food Plot
- CP-25 - Declining Habitat

Green River CREP Changes:

- Started in Fall of 2001
- Moderate enrollment through Spring 2007. (~12,000 acres)
- CREP amendment approved in early 2007: to include increased buffer widths and more area.
- Huge response to expansion.



Green River CREP Accomplishments:

- **101,303 total acres enrolled**
- **3,134 contracts with producers**
- **\$9.0 million in federal incentives**
- **\$16.8 million in federal cost-share**
- **\$18.5 million in federal annual rental**
- **\$247.8 million in federal total rental**
- **Producer testimonies of saving the family farm for future generations!**

Staff Needs to make it work:

- Partners hired a coordinator DOC position
- TNC – 2 staff
- KDFWR – 5 dedicated biologists (Joint positions), 3 supporting biologists (KDFWR)
- 2 CREP Teams:
 - NRCS, FSA, and KDFWR staff



Get it on the Ground



- **Deployed 15 Drills**
- **Hired 4 Seasonal Technicians**
- **Recruited and trained private contractors**

Manage and fill gaps



- **Constant technical support**

- **Top-clipping**
- **Invasive control**



Manage, Monitor and Celebrate!

- Mid-contract Management is a must!
- Monitor population response
- Celebrate
 - Two Chiefs Award
 - Recognized landowners, DCs and politicians



A Few Take Home Points:

1. **CREP is a great opportunity;**
2. **Don't depend on USDA to bring you the program;**
3. **Make it work: Adapt / Modify / Amend**
4. **Think long-term! What is the ultimate goal?**

A vast field of yellow and pink flowers, likely Black-eyed Susans, stretching to the horizon. The flowers are densely packed and interspersed with tall green grasses. The scene is captured from a low angle, looking across the field towards the horizon.

101,303 Acres!